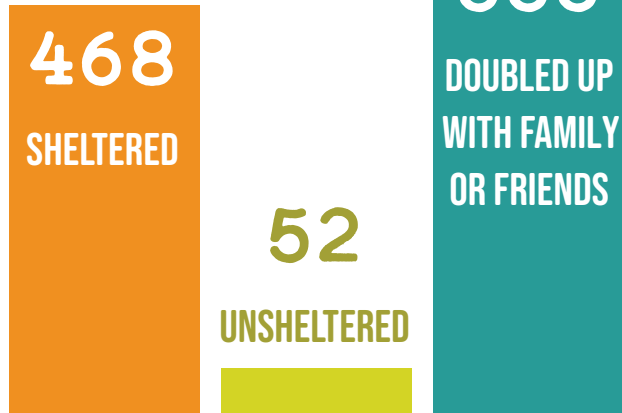


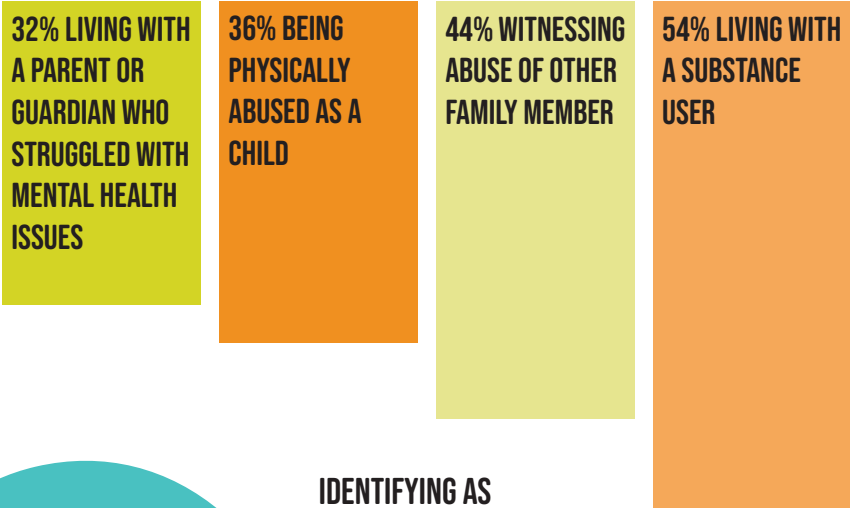
# WHO IS EXPERIENCING HOMELESSNESS IN THE F-M METRO?



On any given night, there are 1,075 individuals estimated to be experiencing homelessness in the F-M Metro.

**\$ INABILITY TO AFFORD RENT** is the primary cause for most individuals' current housing crisis.

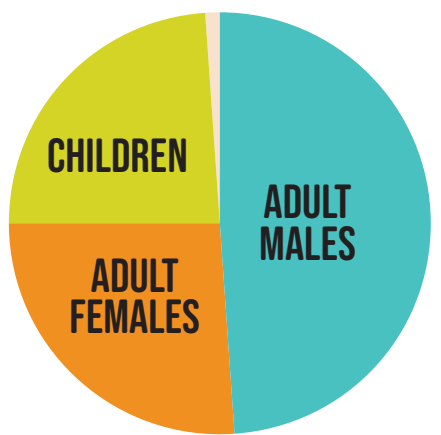
As part of the Everyone Counts Survey, respondents were asked about adverse childhood experiences and traumatic events. Among the adverse childhood experiences inquired about in the survey, those experienced the most were:



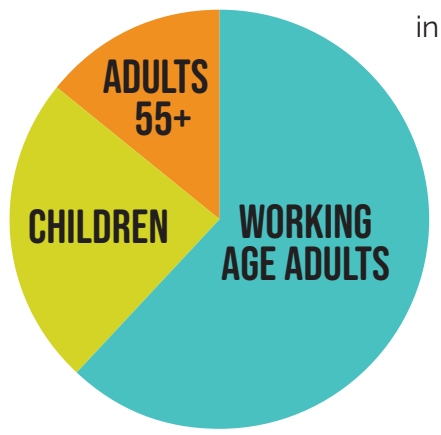
## BARRIERS TO SUCCESS

Individuals experiencing homelessness in our community face many barriers to sustainability, specifically when it comes to gaining and maintaining livable-wage employment and safe, stable housing. Surveying local people experiencing homelessness revealed:

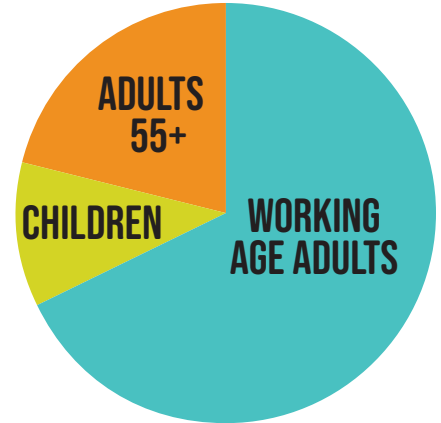
- Poor credit and rental history, employment and livable wages, transportation, and affordable housing are the common reasons for experiencing homelessness.
- Eviction or not having leases renewed, not able to afford rent or house payments, and loss of job or hours cut are top reasons for current experiences of homelessness.
- Common barriers for those unemployed are physical and mental health, transportation, child care, and criminal background.



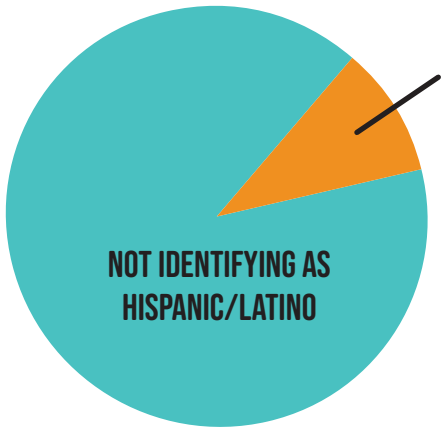
By gender. Less than 1% identify as transgender or gender nonconforming.



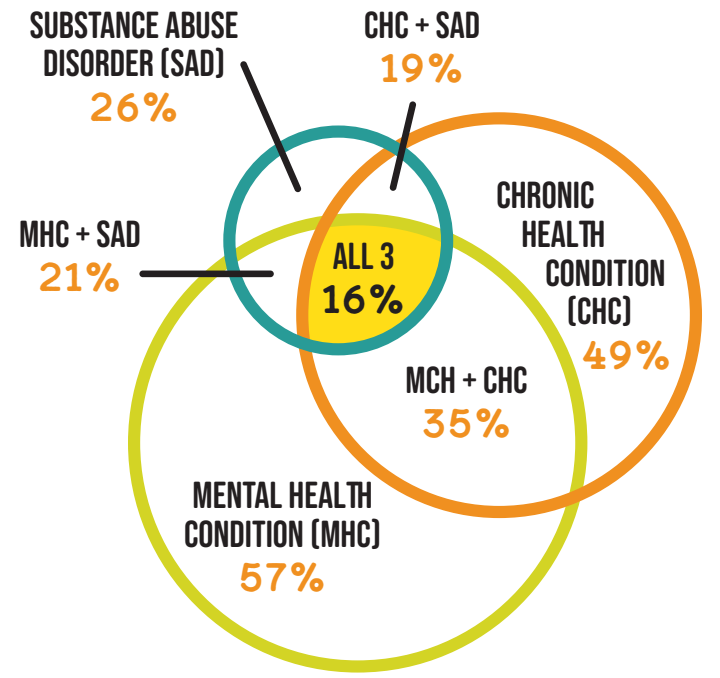
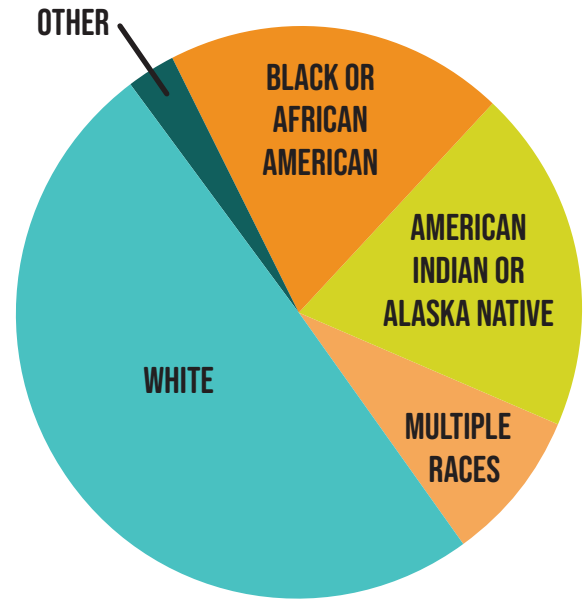
By age for those homeless.



By age for those **chronically** homeless.



There is a significant racial disparity among homeless population compared to the general population in the F-M Metro.

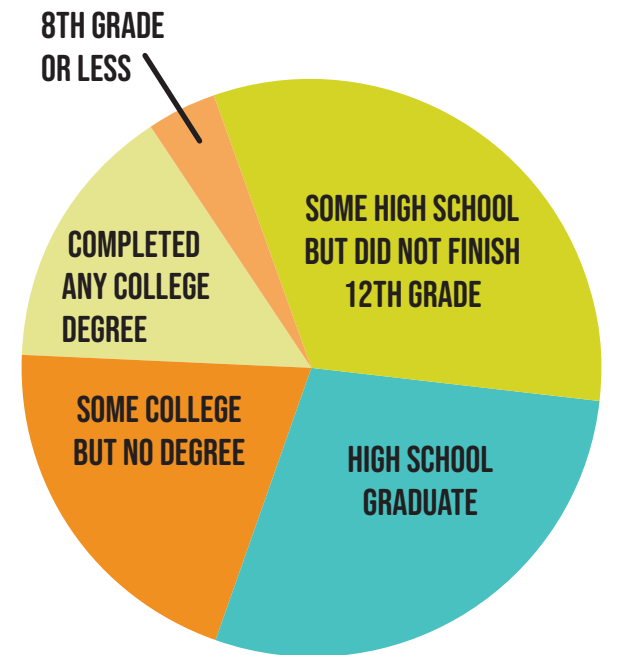


Often individuals experiencing homelessness also experience co-occurring conditions. Co-occurring conditions significantly increase when looking specifically at those who are considered chronically homeless.

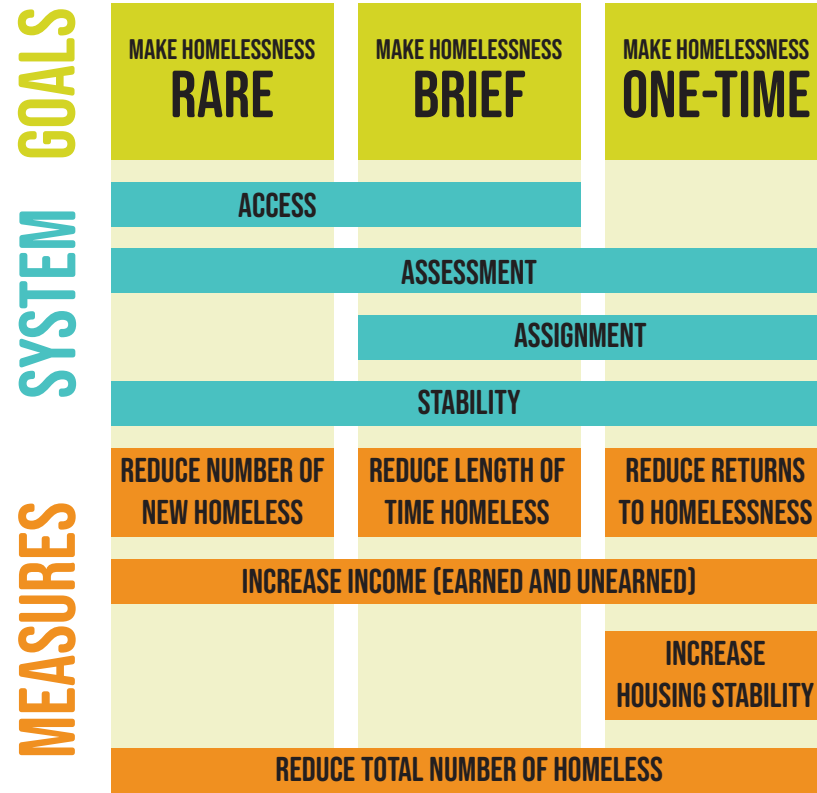
**30%** of respondents are employed and working an average of 24 hours per week.

**63%** of respondents stated that their primary method of transportation was to walk, wheelchair, or bike.

**WHEN ASKED ABOUT WHAT WOULD HELP THEM MAINTAIN STABLE HOUSING, SURVEY RESPONDENTS IDENTIFIED EMPLOYMENT, AFFORDABLE HOUSING, AND TRANSPORTATION AS THE TOP THREE.**



Additionally, while in grade school, 31% of individuals surveyed had an Individualized Education Plan or required some level of Special Education.



## RESPONSE TO HOMELESSNESS

The Coordinated Access, Referral, Entry, & Stabilization System (CARES) is the name of our regional homeless response system operated collaboratively between the ND CoC and the West Central MN CoC, FM Coalition to End Homelessness, and White Earth Nation.

The CARES System starts when a person seeks crisis services, first attempting to prevent homelessness when possible through connection with mainstream and prevention resources. If homelessness cannot be prevented, persons are prioritized for emergency shelter and supportive housing programs based on vulnerability, client choice, and program openings and eligibility. The most vulnerable households are assisted with navigation services. Those offered supportive housing are assisted with identifying and working on goals to obtaining and retaining stable housing. CARES is built on evidence-based models which have proven effective in achieving stable housing and reducing overall cost to the community.

### WHAT CAN YOU DO?

The FM Coalition to End Homelessness brings together partners in solution focused collaboration. For more info, or to join the fight against homelessness, visit us at: [fmhomeless.org](http://fmhomeless.org)



## COST SAVINGS OF HOUSING

Homelessness is expensive to the wider community and housing people reduces costs. This has been demonstrated on a small scale in FM. In 2016, Presentation Partners in Housing was selected as the agency to launch a collaboratively designed Housing Navigation program. Over the past two years of this program, there has been a combined cost savings estimated at \$579,513 for our local community! The FM Coalition to End Homelessness has set a goal to find an efficient and accurate way to measure this type of cost savings estimate on a broader scale to include more service providers and individuals experiencing homelessness.

### THANK YOU TO:

The State of Homelessness Task Force for expertly preparing this report

United Way of Cass-Clay for partnering in this report and making homelessness part of their #1 Bold Goal

NDSU Center for Social Research for preparing the Everyone Counts Homeless Report

Institute for Community Alliances for assisting with CoC data

Sandwich Club Design for layout and design [www.sandwichclubdesign.com](http://www.sandwichclubdesign.com)



STATE OF HOMELESSNESS IN FARGO-MOORHEAD METRO AREA

# 2019 EXECUTIVE SUMMARY

A REPORT OF THE FM COALITION TO END HOMELESSNESS  
IN COLLABORATION WITH UNITED WAY OF CASS-CLAY



**THE FM COALITION TO END HOMELESSNESS WORKS IN PARTNERSHIP TO ACHIEVE PERMANENT SOLUTIONS TO PREVENT AND END HOMELESSNESS.**

FULL REPORT AVAILABLE AT:

[fmhomeless.org](http://fmhomeless.org)  
[unitedwaycassclay.org](http://unitedwaycassclay.org)

Report released June 20, 2019