

FM COALITION
TO END HOMELESSNESS



STATE OF HOMELESSNESS IN THE FARGO-MOORHEAD METRO AREA

2023 EXECUTIVE SUMMARY

A REPORT OF THE FM COALITION TO END HOMELESSNESS
IN COLLABORATION WITH UNITED WAY OF CASS-CLAY

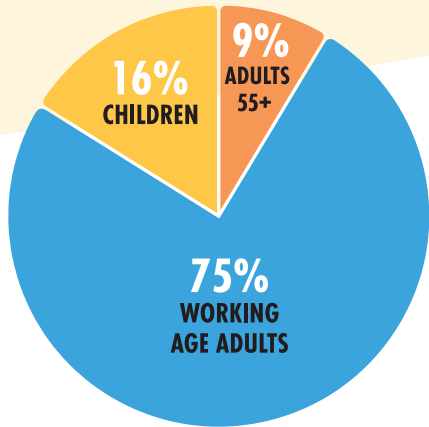
*The FM Coalition to End Homelessness works in partnership to
achieve permanent solutions to prevent and end homelessness.*

FULL REPORT AVAILABLE AT:

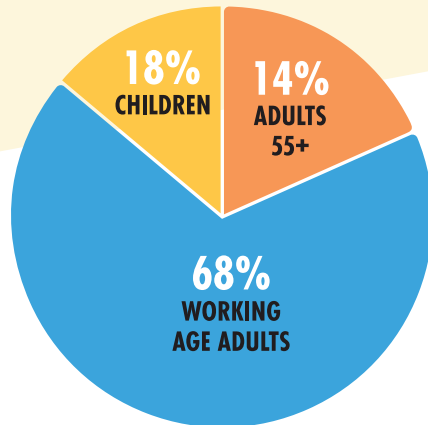
fmhomeless.org
unitedwaycassclay.org



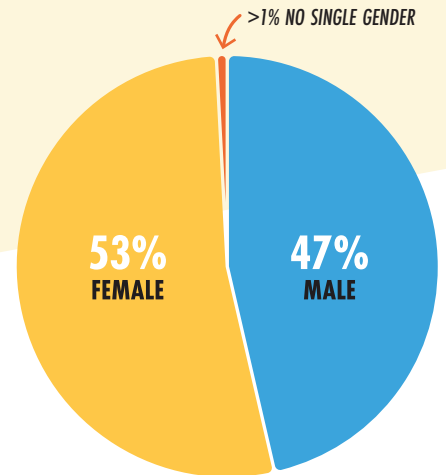
WHO IS EXPERIENCING HOMELESSNESS IN THE F-M METRO?



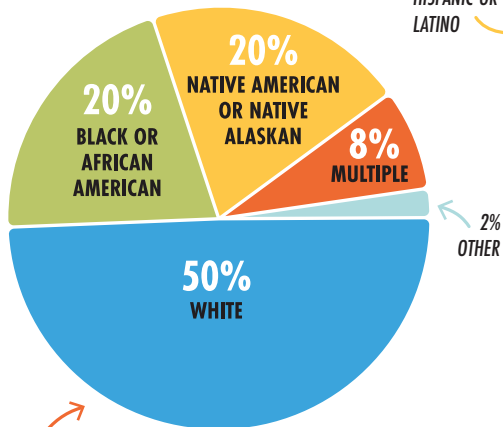
BY AGE FOR THOSE CHRONICALLY HOMELESS



BY AGE FOR THE OVERALL HOMELESS POPULATION

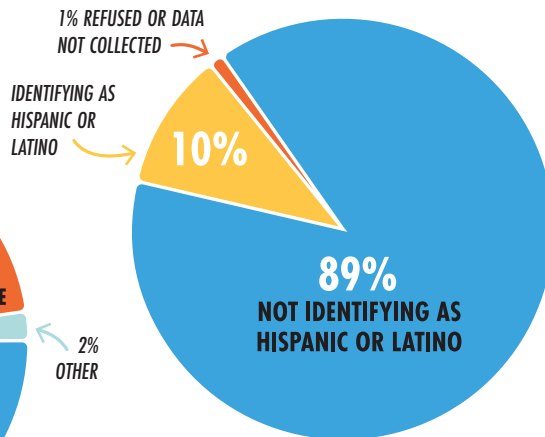


BY GENDER FOR THE YOUTH HOMELESS POPULATION

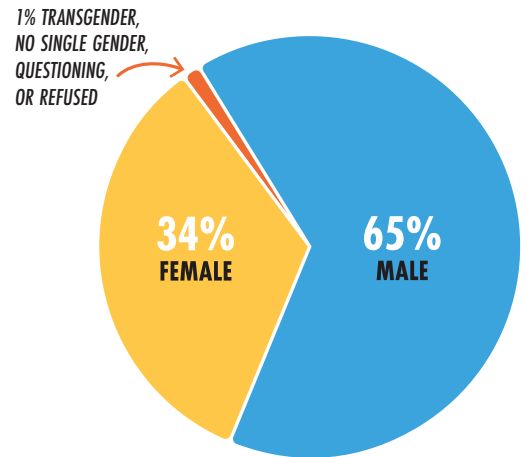


BY RACE

There continues to be a significant racial disparity among the homeless population compared to the general population in the FM Metro.



BY HISPANIC ETHNICITY



BY GENDER FOR THE ADULT HOMELESS POPULATION

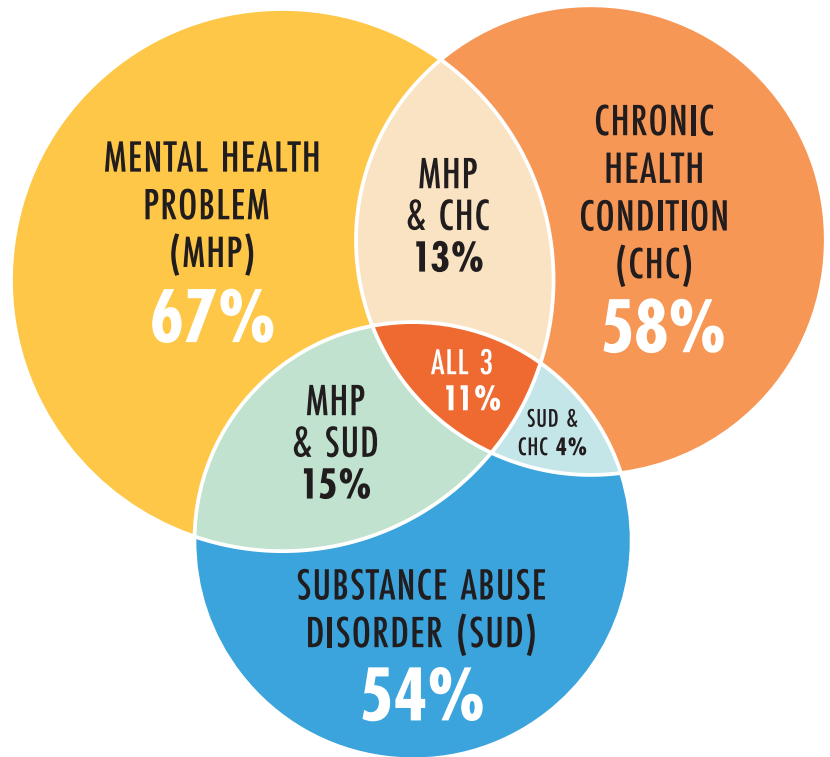
1% TRANSGENDER, NO SINGLE GENDER, QUESTIONING, OR REFUSED

ON ANY GIVEN NIGHT, THERE ARE **1,052 INDIVIDUALS** ESTIMATED TO BE EXPERIENCING HOMELESSNESS IN THE F-M METRO

BARRIERS TO SUCCESS

Individuals experiencing homelessness in our community face many barriers to sustainability, specifically when it comes to gaining and maintaining livable-wage employment and safe, stable housing. Surveying local people experiencing homelessness revealed:

- Poor credit and rental history, employment and livable wages, transportation, and affordable housing are common reasons for experiencing homelessness.
- Eviction or not having leases renewed, not able to afford rent or house payments, and loss of job or hours cut are top reasons for current experiences of homelessness.
- Common barriers for those unemployed are physical and mental health, transportation, child care, and a criminal background.

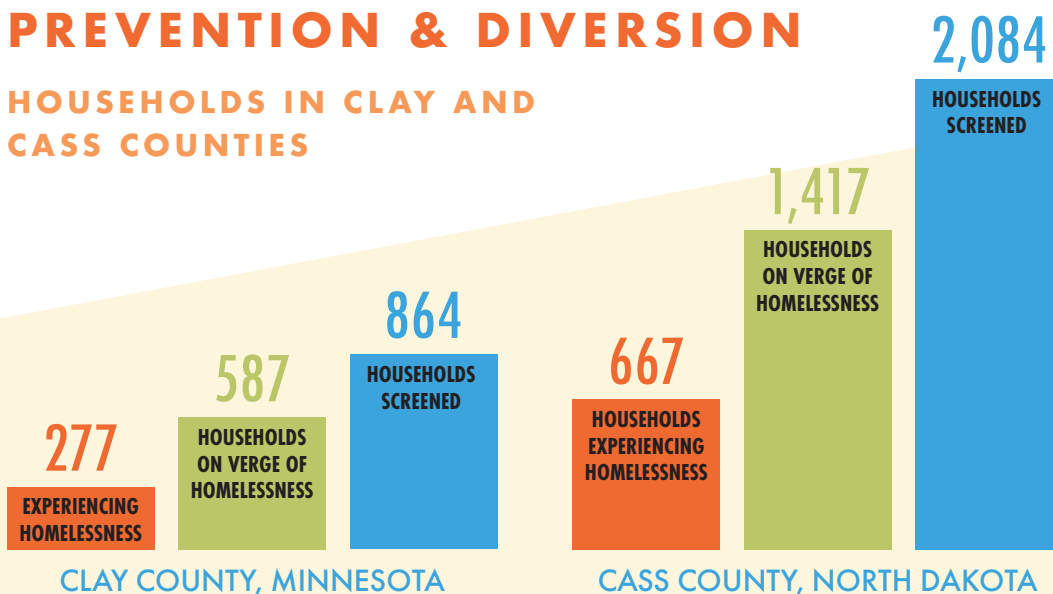


CO-OCCURRING CONDITIONS

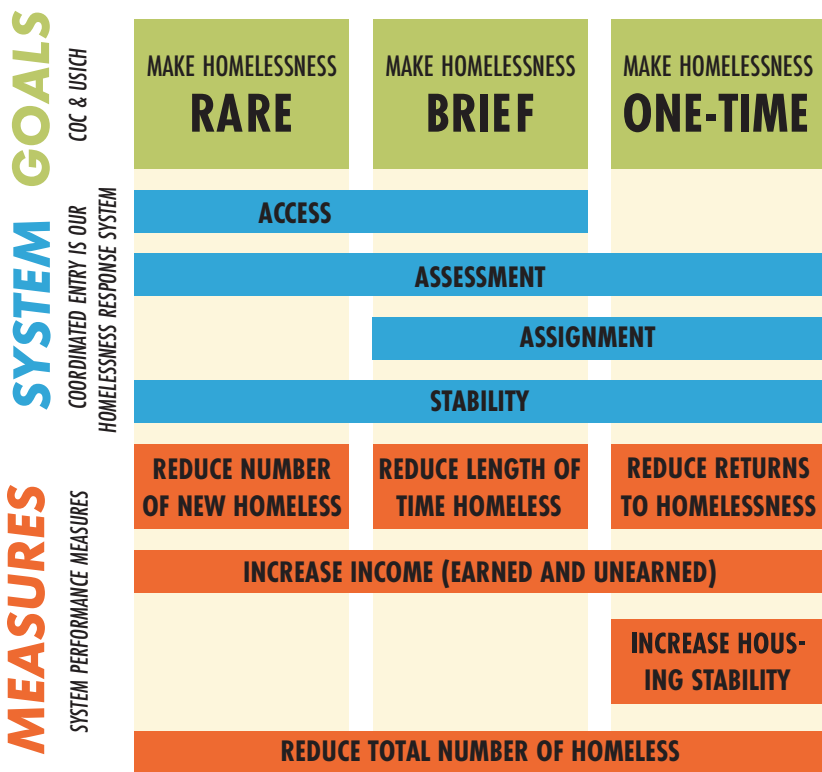
Overall, most individuals that have a chronic health condition, substance abuse disorder, mental health problems, or a combination of these conditions are housed. Individuals experiencing homelessness are not experiencing their housing crisis because of these conditions alone – rather it is due to a unique combination of experiences, traumas, lack of support networks, and access to services or supports. The decrease of pressure on the system could potentially be due to the eviction moratoriums and additional COVID-19 emergency resources. *Chronic Health Condition (CHC) includes physical and developmental disability.

PREVENTION & DIVERSION

HOUSEHOLDS IN CLAY AND CASS COUNTIES



The CARES Homeless Prevention Project (HPP) is a collaborative effort between CAPLP, FM Coalition to End Homelessness, FirstLink, Presentation Partners in Housing, SENDCAA, The Salvation Army, and the YWCA. The goal of the HPP is to ensure low-barrier access for homeless prevention and shelter diversion in line with coordinated entry.



RESPONSE TO HOMELESSNESS

The Coordinated Access, Referral, Entry, & Stabilization System (CARES) is our regional homelessness response system operated collaboratively between the ND & West Central CoCs. The FM Coalition to End Homelessness is a lead partner in CARES, hosting local system committees and staffing.

As a system, CARES strives to manage scarce system resources in a streamlined, transparent, planful, data-driven, and consumer center manner. The CARES System starts when a person seeks crisis services, first attempting to prevent homelessness when possible through connection with mainstream and prevention resources. If homelessness cannot be prevented, persons are prioritized for emergency shelter and supportive housing programs based on vulnerability, client choice, and program openings and eligibility. The most vulnerable households are assisted with navigation services. Those offered supportive housing are assisted with identifying and working on goals to obtaining and retaining stable housing.

For more on CARES, please visit CARESlink.org.



THE COST SAVINGS OF HOUSING

Homelessness is expensive to the wider community and housing people reduces costs. This has been demonstrated on a small scale in the FM Metro through the Housing Navigation program at Presentation Partners in Housing. See the full report for program design and data collection methods. Over the past four years of this program, there has been a combined cost savings estimated at \$1,576,212 for our local community!

WHAT CAN YOU DO TO HELP?

The FM Coalition to End Homelessness brings together partners in solution focused collaboration. For more info, or to join our mission, visit us at: fmhomeless.org

THANK YOU TO:

The State of Homelessness Task Force for expertly preparing this report

United Way of Cass-Clay for ongoing partnership and support of the Coalition, particularly in publishing this report

Institute for Community Alliances for assisting with with data reporting

Sandwich Club Design for design