



STATE OF HOMELESSNESS IN THE FARGO-MOORHEAD METRO AREA

2020 EXECUTIVE SUMMARY

**A REPORT OF THE FM COALITION TO END HOMELESSNESS
IN COLLABORATION WITH UNITED WAY OF CASS-CLAY**



The FM Coalition to End Homelessness works in partnership to achieve permanent solutions to prevent and end homelessness.

FULL REPORT AVAILABLE AT:

**fmhomeless.org
unitedwaycassclay.org**

Report released June 23, 2020

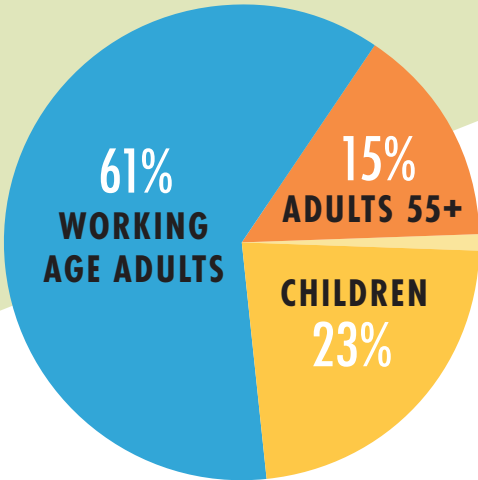
On any given night, there are 1,022 individuals estimated to be experiencing homelessness in the FM Metro.

113
UNSHELTERED

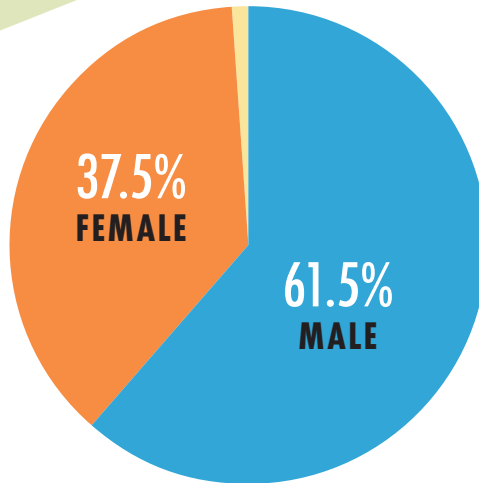
393
SHELTERED

516
DOUBLED UP
with family
or friends

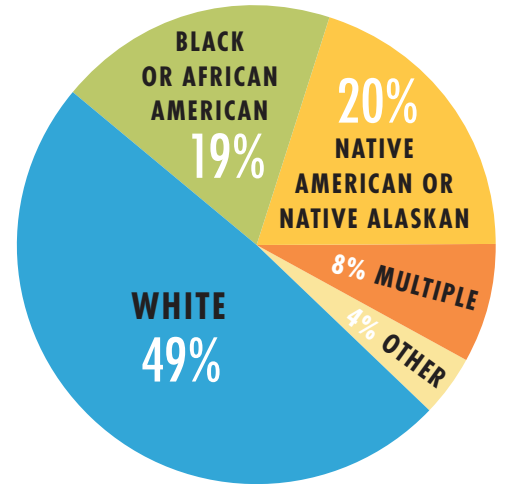
WHO IS EXPERIENCING HOMELESSNESS IN THE FM METRO?



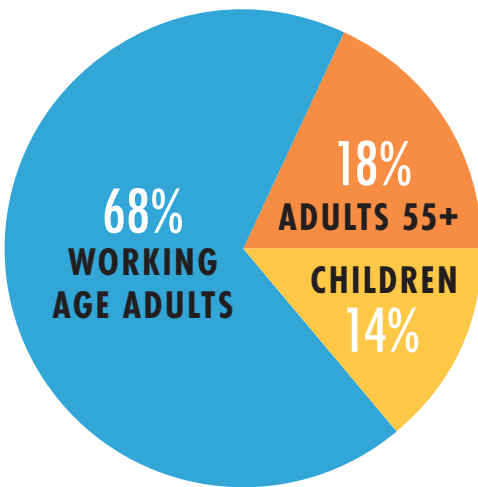
By age for those homeless.



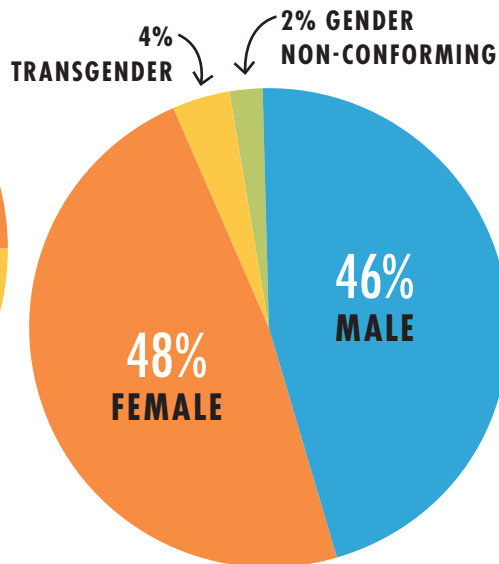
By gender. Less than 1% identify as transgender or gender nonconforming.



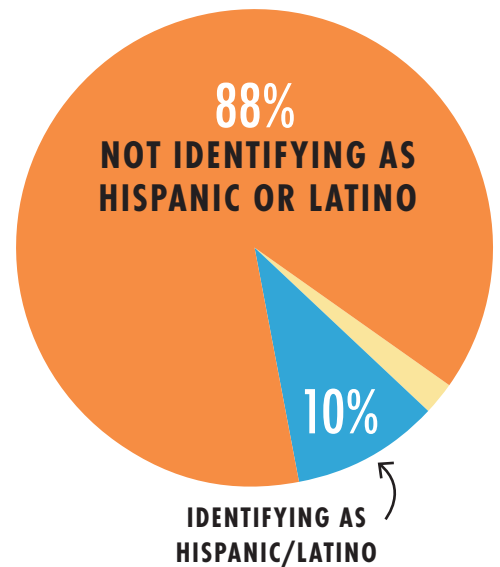
There is a significant racial disparity among homeless population compared to the general population in the FM Metro.



By age for those chronically homeless.

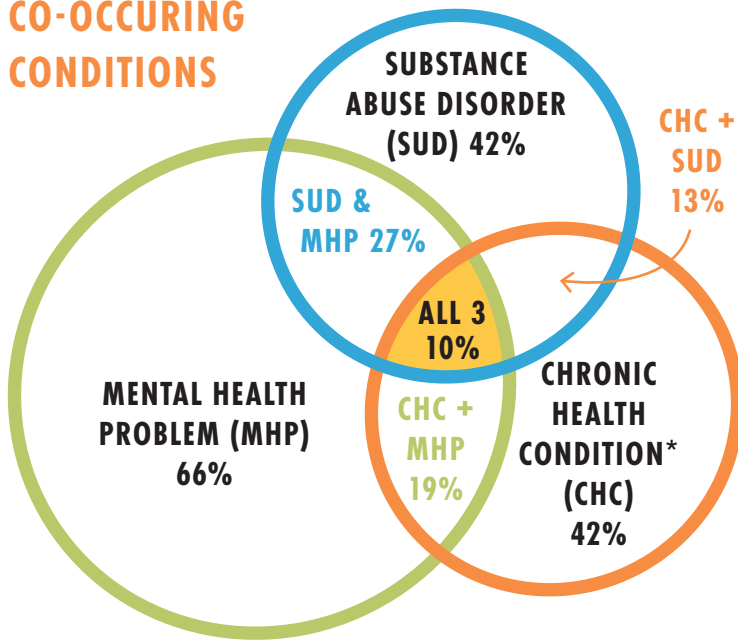


By gender for homeless youth (Young adults 24 years old or younger, living without parents or guardians and may be parenting themselves)



Tan sections of the pie charts represent data that is unknown or not disclosed by clients.

CO-OCCURRING CONDITIONS



Overall, most individuals that have a chronic health condition, substance abuse disorder, mental health problems or a combination of these conditions are housed. Individuals experiencing homelessness are not experiencing their housing crisis because of these conditions alone – rather it is due to a unique combinations of experiences, traumas, lack of support networks, and access to services or supports.

*CHC includes physical and developmental disability.

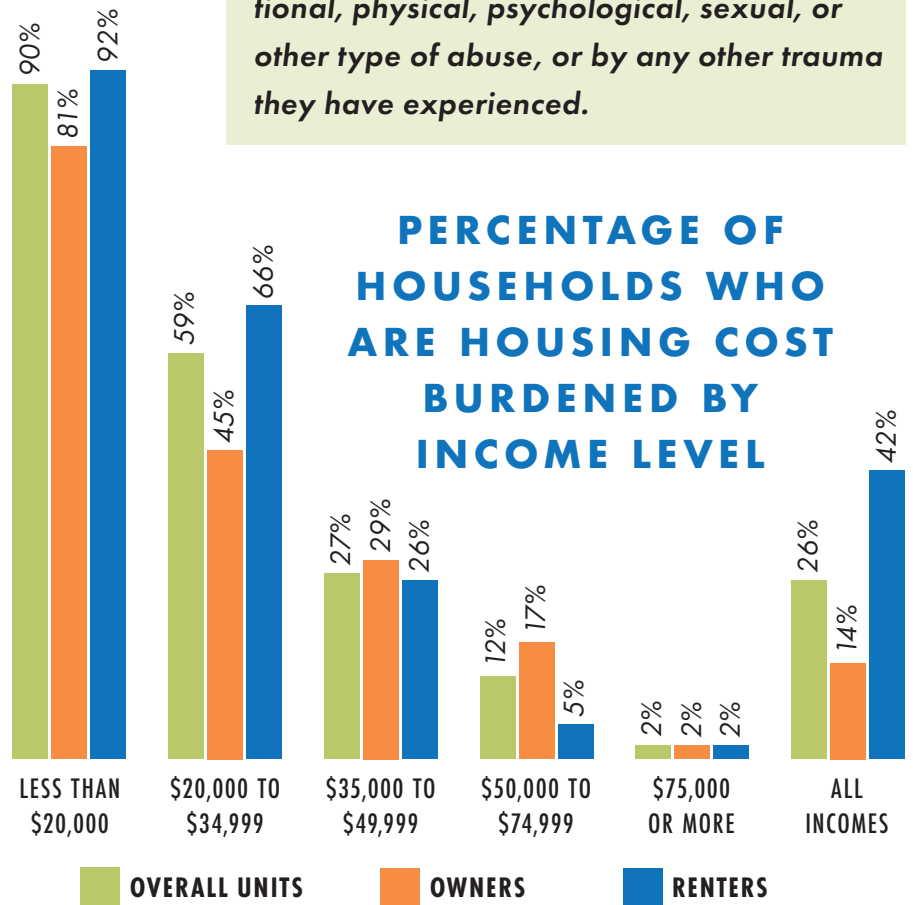
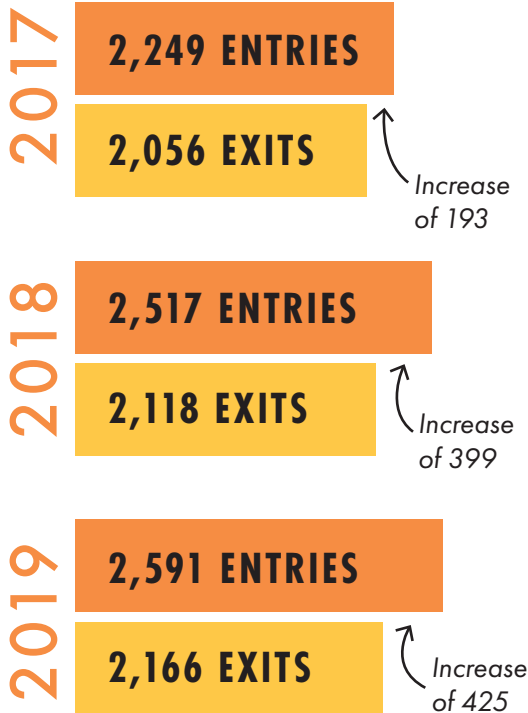
BARRIERS TO SUCCESS

Individuals experiencing homelessness in our community face many barriers to sustainability, specifically when it comes to gaining and maintaining livable-wage employment and safe, stable housing. Surveying local people experiencing homelessness revealed:

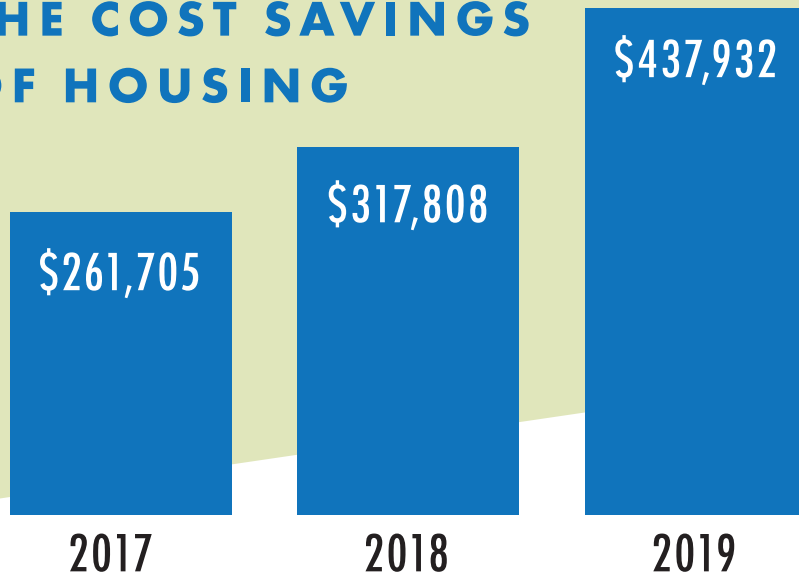
- Poor credit and rental history, employment and livable wages, transportation, and affordable housing are common reasons for experiencing homelessness.
- Eviction or not having leases renewed, not able to afford rent or house payments, and loss of job or hours cut are top reasons for current experiences of homelessness.
- Common barriers for those unemployed are physical and mental health, transportation, child care, and criminal background.

Of those who had been assessed for housing programs utilizing the VI-SPDAT tool, a staggering 58% of participants responded that their current period of homelessness had been caused by an experience of emotional, physical, psychological, sexual, or other type of abuse, or by any other trauma they have experienced.

PRESSURE ON OUR SYSTEM



THE COST SAVINGS OF HOUSING



Homelessness is expensive to the wider community and housing people reduces costs. This has been demonstrated on a small scale in the FM Metro through the Housing Navigation program at Presentation Partners in Housing. See for the full report for program design and data collection methods. Over the past three years of this program, there has been a combined cost savings estimated at **\$1,017,445** for our local community!

RESPONSE TO HOMELESSNESS

The Coordinated Access, Referral, Entry, & Stabilization System (CARES) is our regional homelessness response system operated collaboratively between the ND CoC, West Central CoC, FM Coalition to End Homelessness, and White Earth Nation.

As a system, CARES strives to manage scarce system resources in a streamlined, transparent, planful, data-driven, and consumer center manner. The CARES System starts when a person seeks crisis services, first attempting to prevent homelessness when possible through connection with mainstream and prevention resources. If homelessness cannot be prevented, persons are prioritized for emergency shelter and supportive housing programs based on vulnerability, client choice, and program openings and eligibility. The most vulnerable households are assisted with navigation services. Those offered supportive housing are assisted with identifying and working on goals to obtaining and retaining stable housing.

WHAT CAN YOU DO?

The FM Coalition to End Homelessness brings together partners in solution focused collaboration. For more info, or to join the fight against homelessness, visit us at: **fmhomeless.org**

WHAT'S NEXT?

The FM Coalition to End Homelessness and the United Way of Cass-Clay have declared a priority for ending homelessness for youth and families with children. While we continue to work to end homelessness for all, this focus addresses the needs of some of the most vulnerable in our community and is a strategy to prevent future generations of homelessness.



THANK YOU TO:

- The State of Homelessness Task Force for expertly preparing this report
- United Way of Cass-Clay for partnering in this report and making homelessness part of their bold community goals
- Institute for Community Alliances for assisting with data reporting
- Sandwich Club Design for layout and design: www.sandwichclubdesign.com